

**CATALOG
2020**

AmKo

NO-HUB COUPLINGS



SINCE 1987

ABOUT SAMIL TECHNOLOGY

Founded in May 1987, SAMIL TECHNOLOGY has been a leader of building materials and equipment development and manufacturing for 20 years. SAMIL TECHNOLOGY is confident that it has been contributing to the national development by producing building material export and import replacement effects.

Based on practical experience accumulated over many years of working at construction sites, SAMIL TECHNOLOGY manufactures products customized precisely to customers' needs. At the same time, SAMIL TECHNOLOGY has been promoting productivity and quality improvements that result in reduced costs to customers, such as shortened construction periods by providing easier product installation and ensured quality. SAMIL TECHNOLOGY has earned international quality certifications from recognized authorities such as UPS, CAS, and NSF and thus has been exporting products throughout the world.

Through continued R&D and technological innovation, SAMIL TECHNOLOGY will prepare for the future by discovering and developing core business competencies, and thus strengthen its competitiveness to advance a world-class company. In line with the new economic order of the 21st century, SAMIL TECHNOLOGY promises to strive further to become a global company beloved and trusted by people around the world through the application of "global standard" management practices.



STANDARD NO-HUB COUPLINGS & REDUCING COUPLINGS

IAPMO UPC CERTIFIED COUPLINGS

CHARACTERISTICS

An elastomeric coupling and 300 series of stainless steel shields & bands for use in joining hubless Cast Iron soil pipe and fittings in drainage, waste, and vent systems.

For tightening bands, use torque wrenches with 5/16" Hex- Head/ Shoulder screw.

STANDARD

*ASTM C1277

*CSA B602

AVAILABLE SIZES



Standard No-Hub Couplings

UPC Model No.	Part No.	Description & Connect	Bands (Clamps) Quantity	Quantity Per Carton (pieces)	Carton Q'ty Per Pallet (ctns)
30112	SNHC-112	1-1/2" CAST IRON to 1-1/2" CAST IRON	2 bands	100	72
30200	SNHC-2	2" CAST IRON to 2" CAST IRON	2 bands	100	63
30300	SNHC-3	3" CAST IRON to 3" CAST IRON	2 bands	100	32
30400	SNHC-4	4" CAST IRON to 4" CAST IRON	2 bands	100	24
30500	SNHC-5	5" CAST IRON to 5" CAST IRON	4 bands	20	48
30600	SNHC-6	6" CAST IRON to 6" CAST IRON	4 bands	25	30
30800	SNHC-8	8" CAST IRON to 8" CAST IRON	4 bands	15	24
30100	SNHC-10	10" CAST IRON to 10" CAST IRON	4 bands	10	24
30120	SNHC-12	12" CAST IRON to 12" CAST IRON	6 bands	8	13
30150	SNHC-15	15" CAST IRON to 15" CAST IRON	6 bands	4	19

*Export Standard Packing

Reducing Couplings

UPC Model No.	Part No.	Description & Connect	Bands (Clamps) Quantity	Quantity Per Carton (pieces)	Carton Q'ty Per Pallet (ctns)
30212	SNHC-2112	2" CAST IRON to 1-1/2" CAST IRON	2 bands	100	63
30320	SNHC-32	3" CAST IRON to 2" CAST IRON	2 bands	100	32
30420	SNHC-42	4" CAST IRON to 2" CAST IRON	2 bands	64	32
30430	SHNC-43	4" CAST IRON to 3" CAST IRON	2 bands	64	32

*Export Standard Packing

NSF CERTIFIED STANDARD NO-HUB COUPLINGS

NSF & IAPMO UPC & CSA CERTIFIED COUPLINGS

CHARACTERISTICS

An elastomeric coupling and 300 series of stainless steel shields & bands for use in joining hubless Cast Iron soil pipe and fittings in drainage, waste, and vent systems.

For tightening bands, use torque wrenches with 5/16" Hex- Head/ Shoulder screw.

STANDARD

- *ASTM C1277
- *CSA B602
- *CISPI 310



AVAILABLE SIZES

NSF Certified Standard No-Hub Couplings

UPC Model No.	Part No.	Description & Connect	Bands (Clamps) Quantity	Quantity Per Carton (pieces)	Carton Q'ty Per Pallet (ctns)
1-1/2"	NSNHC-112	1-1/2" CAST IRON to 1-1/2" CAST IRON	2 bands	100	72
2"	NSNHC-2	2" CAST IRON to 2" CAST IRON	2 bands	100	63
3"	NSNHC-3	3" CAST IRON to 3" CAST IRON	2 bands	100	32
4"	NSNHC-4	4" CAST IRON to 4" CAST IRON	2 bands	100	24
5"	NSNHC-5	5" CAST IRON to 5" CAST IRON	4 bands	20	48
6"	NSNHC-6	6" CAST IRON to 6" CAST IRON	4 bands	25	30
8"	NSNHC-8	8" CAST IRON to 8" CAST IRON	4 bands	15	24
10"	NSNHC-10	10" CAST IRON to 10" CAST IRON	4 bands	10	24
12"	NSNHC-12	12" CAST IRON to 12" CAST IRON	6 bands	8	13
15"	NSNHC-15	15" CAST IRON to 15" CAST IRON	6 bands	4	19

*Export Standard Packing

AmKo

NO-HUB COUPLINGS

HEAVY DUTY COUPLINGS

IAPMO UPC CERTIFIED COUPLINGS

**CHARACTERISTICS**

An elastomeric coupling and 300 series stainless steel shield & bands for use in joining hubless Cast Iron soil pipe and fittings in drainage, waste and vent systems.

For tightening bands, use torque wrenches with 5/16" Hex- Head/ Shoulder screw.

STANDARD

ASTM C1540

AVAILABLE SIZES

Heavy Duty Couplings

UPC Model No.	Part No.	Description & Connect	Bands (Clamps) Quantity	Quantity Per Carton (pieces)	Carton Q'ty Per Pallet (ctns)
20112	SHDC-112	1-1/2" CAST IRON to 1-1/2" CAST IRON	4 bands	75	72
20200	SHDC-2	2" CAST IRON to 2" CAST IRON	4 bands	75	63
20300	SHDC-3	3" CAST IRON to 3" CAST IRON	4 bands	48	63
20400	SHDC-4	4" CAST IRON to 4" CAST IRON	4 bands	48	32
20500	SHDC-5	5" CAST IRON to 5" CAST IRON	6 bands	15	48
20600	SHDC-6	6" CAST IRON to 6" CAST IRON	6 bands	15	36
20800	SHDC-8	8" CAST IRON to 8" CAST IRON	6 bands	15	24
21000	SHDC-10	10" CAST IRON to 10" CAST IRON	6 bands	12	23
21200	SHDC-12	12" CAST IRON to 12" CAST IRON	6 bands	8	13
21500	SHDC-15	15" CAST IRON to 15" CAST IRON	6 bands	4	19

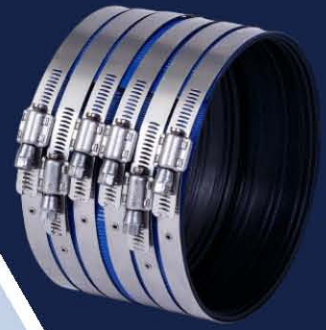
*Export Standard Packing

AmKo

NO- HUB COUPLINGS

HEAVY DUTY COUPLINGS (3 / 8 " SCREW AND COLOR SHIELD)

' IAPMO UPC CERTIFIED COUPLINGS



CHARACTERISTICS

An elastomeric coupling and 300 series of stainless steel shields & bands for use in joining hubless Cast Iron soil pipe and fittings in drainage, waste, and vent systems.

For tightening bands, use torque wrenches with 3/8" Hex- Head/ Shoulder screw.

STANDARD

ASTM C1540

AVAILABLE SIZES

Heavy Duty Couplings (3/8" Screw and color shield)

UPC Model No.	Part No.	Description & Connect	Bands (Clamps) Quantity	Quantity Per Carton (pieces)	Carton Q'ty Per Pallet (ctns)
20112	SXHDC-112	1-1/2" CAST IRON to 1-1/2" CAST IRON	4 bands	75	72
20200	SXHDC-2	2" CAST IRON to 2" CAST IRON	4 bands	75	63
20300	SXHDC-3	3" CAST IRON to 3" CAST IRON	4 bands	48	63
20400	SXHDC-4	4" CAST IRON to 4" CAST IRON	4 bands	48	32
20500	SXHDC-5	5" CAST IRON to 5" CAST IRON	6 bands	15	48
20600	SXHDC-6	6" CAST IRON to 6" CAST IRON	6 bands	15	36
20800	SXHDC-8	8" CAST IRON to 8" CAST IRON	6 bands	15	24
21000	SXHDC-10	10" CAST IRON to 10" CAST IRON	6 bands	12	23
21200	SXHDC-12	12" CAST IRON to 12" CAST IRON	6 bands	8	13
21500	SXHDC-15	15" CAST IRON to 15" CAST IRON	6 bands	4	19

3/8" Hex-Head/Shoulder screw

AmKo

NO- HUB COUPLINGS

SHIELDED TRANSITION COUPLINGS

IAPMO UPC CERTIFIED COUPLINGS

CHARACTERISTICS

Shielded Transition Couplings for use with different DWV pipe and fitting above ground.

For tightening bands, use torque wrenches with 3/8" Hex- Head/ Shoulder screw.

STANDARD

*ASTM C1460

AVAILABLE SIZE1

Cast Iron, Plastic, or Steel to Cast Iron, Plastic, or Steel

UPC Model No.	Part No.	Mission Equivalent	Description & Connect	Bands (Clamps) Quantity	Quantity Per Carton (pieces)	Carton Q'ty Per Pallet (ctns)
TC00-150	STCCP-150	CP 150	1-1/2" CI/PL/ST to 1-1/2" CI/PL/ST	2 bands	100	72
TC00-22	STCCP-22	CP 200	2" CI/PL/ST to 2" CI/PL/ST	2 bands	100	63
TC00-33	STCCP-33	CP 33	3" CI to 3" PL/ST/XHCI	2 bands	100	32
TC00-44	STCCP-44	CP 44	4" CI to 4" PL/ST/XHCI	2 bands	100	24
TC00-55	STCCP-55	CP 55	5" CI to 5" PL/ST/XHCI	4 bands	20	48
TC00-66	STCCP-66	CP 66	6" CI to 6" PL/ST/XHCI	4 bands	25	30
TC00-88	STCCP-88	CP 88	8" CI to 8" PL/ST/XHCI	4 bands	15	24
TC00-215	STCCP-215	CP 215	2" CI/PL/ST to 1-1/2" CI/PL/ST	2 bands	100	63
TC00-43	STCCP-43	CP 43	4" CI to 3" PL/ST/XHCI	2 bands	64	32

Cast Iron, Plastic, or Steel to Copper(Cu), or Plastic

*Export Standard Packing

UPC Model No.	Part No.	Mission Equivalent	Description & Connect	Bands (Clamps) Quantity	Quantity Per Carton (pieces)	Carton Q'ty Per Pallet (ctns)
TC01-150	STCCK-150	CK 115	1-1/2" CI/PL/ST to 1-1/2" Cu or 1-1/4" PL/ST	2 bands	100	72
TC01-22	STCCK-22	CK 22	2" CI to 2" Cu	2 bands	100	63
TC01-33	STCCK-33	CK 33	3" CI to 3" Cu	2 bands	100	32
TC01-44	STCCK-44	CK 44	4" CI to 4" Cu	2 bands	100	24
TC01-215	STCCK-215	CK 215	2" CI/PL/ST to 1-1/2" Cu or 1-1/4" PL/ST	2 bands	100	63
TC01-32	STCCK-32	CK 32	3" CI to 2" Cu	2 bands	100	32
TC01-43	STCCK-43	CK43	4" CI to 3" Cu	2 bands	100	32

*Export Standard Packing

SHIELDED TRANSITION COUPLINGS

IAPMO UPC CERTIFIED COUPLINGS

AVAILABLE SIZE 2

Cast Iron, Plastic, or Steel to Tubular

UPC Model No.	Part No.	Mission Equivalent	Description & Connect	Bands (Clamps) Quantity	Quantity Per Carton (pieces)	Carton Q'ty Per Pallet (ctns)
TC02-150	STCT-150	T 150	1-1/2" CI/PL/ST to 1-1/2" Tubular	2 bands	100	72
TC02-215	STCT-212	T 215	2" CI/PL/ST to 1-1/2" Tubular	2 bands	100	63

*Export Standard Packing

Copper (CU) to Copper(CU), or Plastic

UPC Model No.	Part No.	Mission Equivalent	Description & Connect	Bands (Clamps) Quantity	Quantity Per Carton (pieces)	Carton Q'ty Per Pallet (ctns)
TC03-150	STCK-150	K 150	1-1/2" Cu or 1-1/4" PL/ST to 1-1/2" Cu or 1-1/4" PL/ST	2 bands	100	72

*Export Standard Packing

Plastic, Steel, or Extra Heavy Cast Iron to Plastic, Steel, or Extra Heavy Cast Iron

UPC Model No.	Part No.	Mission Equivalent	Description & Connect	Bands (Clamps) Quantity	Quantity Per Carton (pieces)	Carton Q'ty Per Pallet (ctns)
TC04-33	STCP-33	P 300	3" PL/ST/XHCI to 3" PL/ST/XHCI	2 bands	100	32
TC04-44	STCP-44	P 400	4" PL/ST/XHCI to 4" PL/ST/XHCI	2 bands	100	24

*Export Standard Packing



FLEXIBLE COUPLINGS/REDUCING COUPLINGS - CAST IRON, PLASTIC

' IAPMO UPC CERTIFIED COUPLINGS

CHARACTERISTICS

STANDARD

Flexible elastomeric transition couplings for underground drainage and sewer piping systems.

ASTM C1173

or tightening bands, use torque wrenches with 5 / 16 Hex- Head/ Shoulder screw.



Flexible Couplings - Cast Iron, Plastic

UPC Model No.	Part No.	Description & Connect	Bands (Clamps) Quantity	Quantity Per Carton (pieces)	Carton Q'ty Per Pallet (ctns)
SR-150	SFC-150	1-1/2" CI/PLASTIC to 1-1/2" CI/PLASTIC	2 bands	50	50
SR-22	SFC-22	2" CI/PLASTIC to 2" CI/PLASTIC	2 bands	50	50
SR-33	SFC-33	3" CI/PLASTIC to 3" CI/PLASTIC	2 bands	30	30
SR-44	SFC-44	4" CI/PLASTIC to 4" CI/PLASTIC	2 bands	30	30
SR-66	SFC-66	6" CI/PLASTIC to 6" CI/PLASTIC	2 bands	12	12

*Export Standard Packing

Reducing Flexible Couplings - Cast Iron, Plastic

UPC Model No.	Part No.	Description & Connect	Bands (Clamps) Quantity	Quantity Per Carton (pieces)	Carton Q'ty Per Pallet (ctns)
SR-215	SFC-215	2" CI/PLASTIC to 1-1/2" CI/PLASTIC	2 bands	50	50
SR-32	SFC-32	3" CI/PLASTIC to 2" CI/PLASTIC	2 bands	30	30
SR42	SFC-42	4" CI/PLASTIC to 2" CI/PLASTIC	2 bands	30	30
SR43	SFC-43	4" CI/PLASTIC to 3" CI/PLASTIC	2 bands	30	30
SR64	SFC-64	6" CI/PLASTIC to 4" CI/PLASTIC	2 bands	12	12

*Export Standard Packing



AmKo

NO-HUB COUPLINGS

Samil Technology Co., Ltd.
17 / 8 Moo.4 T.Nongkham A.Sriracha Chonburi 20230

Phone: 038-480258

Email: samilaxon@gmail.com